



**METALTECH**®

# THE ULTIMATE WORK PLATFORMS

---

**WIDE WORK  
PLATFORM  
FOR EXTRA  
COMFORT**

---

**MADE OF  
ROBUST  
MATERIAL**

---

**ENSURE A  
SECURE AND  
SAFE WORK  
ENVIRONMENT**

---

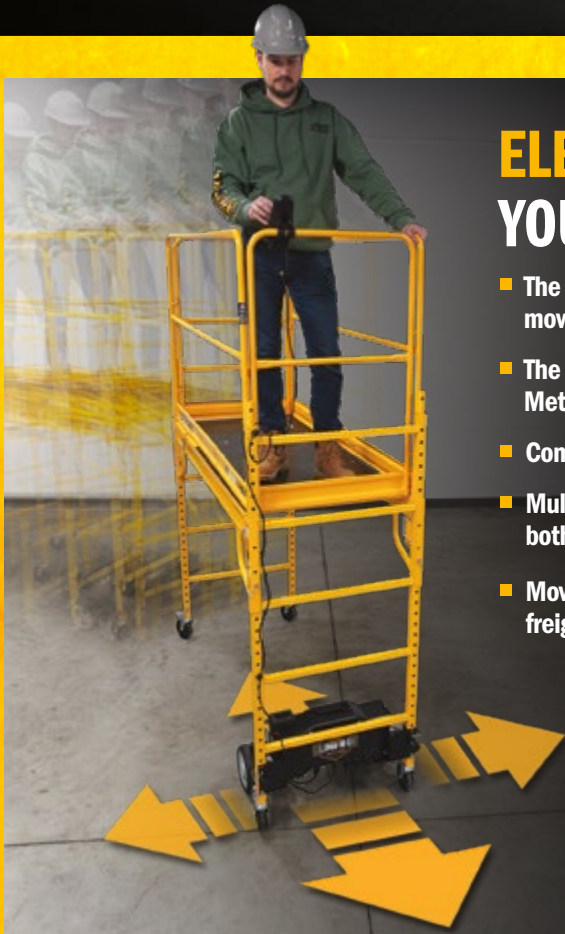


**BUILT TOUGH FOR  
SAFETY**

# BETTER SELL THROUGH WITH **RETAIL READY** PACKAGING



Discover Metaltech's latest product packaging designed to offer customers a quick and comprehensive understanding of the product. Innovative safety rails, convenient foldaway tool shelves and secure locking mechanisms are only a few of the features included in this category. These "No Tool Required" work platforms offer contractors and consumers ease of use, safety, and affordability, in new packaging for effortless merchandising.



## **ELECTRIC MOTOR TO MOVE YOUR SCAFFOLDING EFFORTLESSLY**

- The Climb-N-Go allows the scaffolding to be moved without having to descend to move it
- The electric motor can be installed on all Metaltech Baker type scaffolds
- Compact and easy to transport to a job site
- Multidirectional joystick control positionable both on a rung or on a guardrail
- Moves on a job site without the need for a freight elevator, unlike a scissor lift

Model: I-CNG



**NEW**

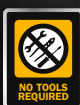


# JOBSITE SERIES BAKER

## 6' HIGH BAKER STYLE SCAFFOLD

**1,100<sub>lb</sub>**  
LOAD CAPACITY

**12'**  
REACH



### MULTI PURPOSE

Suitable and safe for all types of interior work. At 30" (76 cm) wide, it can easily roll through doorways.



### STACKABLE UP TO 18' (5.5 M)

Easily stackable up to three units high in order to reach a range of 24' (7.4 m).



### QUICK AND EASY HEIGHT ADJUSTMENT

Platform height adjusts at 2" (5 cm) increments from 27" to 73" (68.6 to 185 cm).



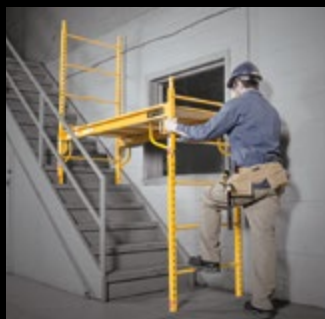
### DOUBLE LOCKING CASTERS

High capacity 5" (13 cm) casters with both wheel and swivel locks.



### STORAGE & TRANSPORT

To haul your equipment and heavy loads to and from job sites. 1,100 lb capacity.



### STAIRWAYS

Each end can adjust separately to be used on both level surfaces and stairways.

PRODUCT CODE	I-CISC
ASSEMBLED DIMENSIONS (W x D x H)	74.75 X 29.75 X 75 IN. (189.9 X 75.6 X 190.5 CM)
PACKAGE DIMENSIONS (W x D x H)	75 X 30.5 X 5.25 IN. (190.5 X 77.5 X 13.3 CM)
WEIGHT	113.7 LB (51.6 KG)
LOAD CAPACITY	1,100 LB (500 KG) COMBINED WEIGHT OF USER + MATERIALS
WORKING HEIGHTS	FROM 27 TO 73 IN. (68.6 TO 185 CM) 2 IN. (5 CM) INCREMENT ADJUSTABLE HEIGHTS
REACH	12 FT (3.7 M), STACKABLE UP TO 3 UNITS HIGH FOR 24 FT (7.4 M) REACH
CASTERS	5 IN. (13 CM) DOUBLE LOCKING HEAVY DUTY
OPTIONS	SEE PAGE 5
UPC CODE	778300200108

## COMPLETE TOWER SETS WITH OUTRIGGERS AND GUARDRAILS SYSTEMS



### ✓ 12' HIGH TOWER COMPONENTS

- 2 Baker Scaffold Structure
- 4 14" (35.5 cm) Outriggers
- 1 Guardrails system
- 8 Heavy duty casters



PRODUCT CODE	I-TCISC
ASSEMBLED DIMENSIONS (W x D x H)	74 X 58.5 X 183 IN. (1.88 X 1.49 X 4.65 M)
PACKAGE DIMENSIONS (W x D x H)	75.2 X 43.4 X 15 IN. (191 X 110.2 X 38.1 CM)
PACKAGING WEIGHT	347.8 LB (157.8 KG)
LOAD CAPACITY	948 LB (431 KG) COMBINED WEIGHT OF USER + MATERIALS
WORKING HEIGHTS	FROM 2.25 TO 11.5 FT (0.68 TO 3.51 M) HEIGHT INCREMENT OF 2 IN. (5 CM)
REACH	17.5 FT (5.3 M)
CASTERS	5 IN. (13 CM) DOUBLE LOCKING HEAVY DUTY
UPC CODE	778300200009



### ✓ 18' HIGH TOWER COMPONENTS

- 3 Baker Scaffold Structure
- 4 46" (117 cm) Outriggers
- 1 Guardrails system
- 12 Heavy duty casters



PRODUCT CODE	I-T3CISC
ASSEMBLED DIMENSIONS (W x D x H)	74 X 122 X 236 IN. (1.88 X 3.1 X 6 M)
PACKAGE DIMENSIONS (W x D x H)	75.2 X 51 X 30.3 IN. (191 X 130 X 77 CM)
PACKAGING WEIGHT	629.6 LB (285.6 KG)
LOAD CAPACITY	851 LB (387 KG) COMBINED WEIGHT OF USER + MATERIALS
WORKING HEIGHTS	FROM 2.25 TO 16.9 FT (0.68 TO 5.15 M) HEIGHT INCREMENT OF 2 IN. (5 CM)
REACH	24 FT (7.3 M)
CASTERS	5 IN. (13 CM) DOUBLE LOCKING HEAVY DUTY
UPC CODE	778300200511



## AVAILABLE OPTIONS FOR BAKER STYLE SCAFFOLDS



### GUARDRAILS SYSTEM

PRODUCT CODE	I-CISGRJP
ASSEMBLED DIMENSIONS (W x D x H)	69.75 X 29.25 X 44.5 IN. (177.2 X 74.3 X 113 CM)
PACKAGE DIMENSIONS (W x D x H)	46 X 31.25 X 4.5 IN. (116.8 X 79.4 X 11.4 CM)
WEIGHT	55.4 LB (25.2 KG)
COMPATIBLE WITH METALTECH MODELS	I-CISC, I-CAISC, I-CISCTP, I-CISCAS, I-BMSS, I-CISCDW, I-CISCH1, I-CISCMT



### FOR 2 UNITS HIGH

### SET OF 14" OUTRIGGERS

PRODUCT CODE	I-CISO4
ASSEMBLED DIMENSIONS (W x D x H)	16 X 3.75 X 23.5 IN. (40.6 X 9.5 X 59.25 CM)
PACKAGE DIMENSIONS (W x D x H)	22 X 16.25 X 4.75 IN. (56 X 41 X 12 CM)
WEIGHT	31.4 LB (14.25 KG)
COMPATIBLE WITH METALTECH MODELS	I-CISC, I-CAISC, I-CISCTP, I-CISCAS, I-CISCH1, I-CISCMT



### FOR 3 UNITS HIGH

### SET OF 46" OUTRIGGERS

PRODUCT CODE	I-BMSO4TT
ASSEMBLED DIMENSIONS (W x D x H)	51.5 X 4 X 52.25 IN. (130.81 X 101.6 X 132.72 CM)
PACKAGE DIMENSIONS (W x D x H)	64 X 15.5 X 6 IN. (162.56 X 39.4 X 15.2 CM)
WEIGHT	104 LB (47.3 KG)
COMPATIBLE WITH METALTECH MODELS	I-CISC, I-CAISC, I-CISCTP, I-CISCAS, I-CISCPY, I-CISCDW, I-CISCH1, I-BMSS, I-CISCMT



### TOOL SHELF

PRODUCT CODE	I-CISTR
ASSEMBLED DIMENSIONS (W x D x H)	30.25 X 20 X 2.75 IN. (76.8 X 50.8 X 6.7 CM)
PACKAGE DIMENSIONS (W x D x H)	31.25 X 20.75 X 9.25 IN. (79.4 X 52.7 X 23.5 CM)
WEIGHT	5.5 LB (2.5 KG)
COMPATIBLE WITH METALTECH MODELS	I-CISC, I-CAISC, I-CISCTP, I-CISCAS, I-CISCPY, I-CISCDW, I-IRC, I-CISCH1, I-CISCMT



### 39" HIGH EXTENSION

PRODUCT CODE	I-ISEX4PPNCAS
ASSEMBLED DIMENSIONS (W x D x H)	73.75 X 29 X 42.5 IN. (187.3 X 73.7 X 108 CM)
PACKAGE DIMENSIONS (W x D x H)	83.5 X 30.75 X 3.75 IN. (212.1 X 78.1 X 9.5 CM)
WEIGHT	60.2 LB (27.3 KG)
COMPATIBLE WITH METALTECH MODELS	I-CISC, I-CISCAS, I-CISCTP, I-BMSS, I-CISCDW, I-CISCH1, I-CISCMT



### PLATFORM WITH TRAP DOOR

PRODUCT CODE	I-CISPT
ASSEMBLED DIMENSIONS (W x D x H)	67 X 29 X 1.5 IN. (170.2 X 73.7 X 3.8 CM)
PACKAGE DIMENSIONS (W x D x H)	68.5 X 30.5 X 2 IN. (174 X 77.5 X 5.1 CM)
WEIGHT	38 LB (17.3 KG)
COMPATIBLE WITH METALTECH MODELS	I-CISC, I-CISCTP, I-CISCAS, I-CISCDW, I-CISCH1, I-CISCMT



### SET OF 4 CASTERS WITH LEVELING JACK\*

PRODUCT CODE	I-IBSJ12H4
ASSEMBLED DIMENSIONS (W x D x H)	5.75 X 2.5 X 19.5 IN. (14.6 X 6.4 X 49.5 CM)
PACKAGE DIMENSIONS (W x D x H)	20 X 8 X 4.75 IN. (50.8 X 20.3 X 12.1 CM)
WEIGHT	19.4 LB (8.8 KG)
COMPATIBLE WITH METALTECH MODELS	I-CISC, I-CISCTP, I-CISCDW, I-CISCWB, I-CISCH1, I-CISCAS, I-CISCMT, I-SB3M

\* LEVELING JACK ADJUSTABLE TO 6"



### SET OF 4 LEVELING JACKS

PRODUCT CODE	I-IBSJ12H4
ASSEMBLED DIMENSIONS (W x D x H)	9.5 X 5.5 X 12.25 IN. (23.6 X 13.5 X 31 CM)
PACKAGE DIMENSIONS (W x D x H)	13 X 13 X 8 IN. (33.6 X 33.2 X 20.4 CM)
WEIGHT	24.2 LB (11 KG)
COMPATIBLE WITH METALTECH MODELS	I-CISC, I-CAISC, I-CISCTP, I-CISCAS, I-BMSS, I-CISCDW, I-CISCH1, I-CISCMT



### SET OF 4 BASE PLATES

PRODUCT CODE	I-IBBF4
ASSEMBLED DIMENSIONS (W x D x H)	4.75 X 4.75 X 4.75 IN. (12 X 12 X 12 CM)
PACKAGE DIMENSIONS (W x D x H)	11 X 5.25 X 5.5 IN. (27.8 X 13.3 X 13.8 CM)
WEIGHT	10.1 LB (4.6 KG)
COMPATIBLE WITH METALTECH MODELS	I-CISC, I-CAISC, I-CISCTP, I-CISCAS, I-CISCPY, I-BMSS, I-CISCDW, I-CISCH1, I-CISCMT



### SAFETY BRAKES

PRODUCT CODE	I-ISL
ASSEMBLED DIMENSIONS (W x D x H)	30.25 X 20 X 2.75 IN. (76.8 X 50.8 X 6.7 CM)
PACKAGE DIMENSIONS (W x D x H)	67.1 X 4.25 X 4.25 IN. (170.4 X 10.8 X 10.8 CM)
WEIGHT	25.79 LB (11.69 KG)
COMPATIBLE WITH METALTECH MODELS	I-CISC, I-CAISC, I-CISCTP, I-CISCAS, I-CISCPY, I-BMSS, I-CISCDW, I-CISCH1, I-CISCMT



### SUPPORT ROLLER

PRODUCT CODE	I-CISRL
ASSEMBLED DIMENSIONS (W x D x H)	12.25 X 2 X 28.25 IN. (31 X 5 X 71.8 CM)
PACKAGE DIMENSIONS (W x D x H)	25 X 3.75 X 2.25 IN. (63.6 X 9.5 X 5.7 CM)
WEIGHT	8.75 LB (3.97 KG)
COMPATIBLE WITH METALTECH MODELS	I-CISC, I-CISCTP, I-CISCPY, I-CISCAS, I-CISCDW, I-BMSS, I-CISCMT



### ADD-ON STORAGE SHELF

PRODUCT CODE	I-CISSU
ASSEMBLED DIMENSIONS (W x D x H)	74.25 X 25.5 X 2 IN. (188.6 X 64.8 X 5 CM)
PACKAGE DIMENSIONS (W x D x H)	40.25 X 18.25 X 2.5 IN. (102.2 X 46.4 X 6.4 CM)
WEIGHT	27.6 LB (12.5 KG)
COMPATIBLE WITH METALTECH MODELS	I-CISC, I-CISCTP, I-CISCPY, I-CISCAS, I-CISCDW, I-CISCWB, I-CISCMT, I-CISCH1



## JOBSITE™ SERIES 6'

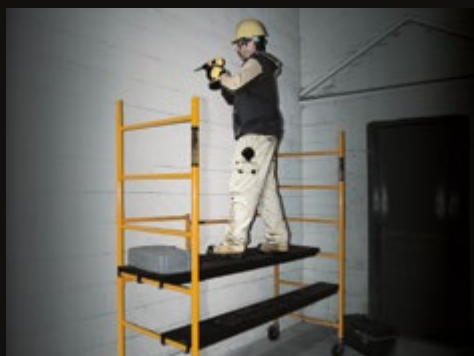
**850 lb**  
LOAD CAPACITY

**12'**  
REACH



### STACKABLE UP TO 12' (3.7 M)

Easily stackable up to two units high in order to reach a range of 18' (5.5 m).



### MULTI-LEVEL WORKING AREA

Multi-level working area. Adjust platforms up to the desired level for a comfortable workplace.

PRODUCT CODE	I-IRC
ASSEMBLED DIMENSIONS (W x D x H)	75 X 30.5 X 78.25 IN. (190.5 X 77.5 X 198.8 CM)
PACKAGE DIMENSIONS (W x D x H)	76.75 X 31 X 6.75 IN. (195 X 78.7 X 17.2 CM)
WEIGHT	135.5 LB (61.5 KG)
LOAD CAPACITY	850 LB (385 KG) COMBINED WEIGHT OF USER + MATERIALS
WORKING HEIGHTS	13-25-37-49-61-73 IN. (33-63.5-94-124.5-155-185.5 CM)
REACH	12 FT (3.7 M) STACKABLE UP TO 2 UNITS FOR 18 FT (5.5 M) REACH
CASTERS	5 IN. (13 CM) DOUBLE LOCKING HEAVY DUTY
OPTIONS	GUARDRAILS / SET OF 4 OUTRIGGERS / TOOL SHELF / 3 FT (91.4 CM) OR 6 FT (182.9 CM) EXTENSIONS
UPC CODE	778300400157



REVERSIBLE PLATFORM; DECK ON ONE SIDE, UNIVERSAL MITER SAW STAND ON THE OTHER

## SCAFFOLD BENCH™

**1100 lb**  
LOAD CAPACITY

**12'**  
REACH



### ALL INCLUSIVE

Standard Baker Style Scaffolding, Miter Saw Stand, Work Bench, Utility Cart and Storage Rack.

PRODUCT CODE	I-CISCMT
ASSEMBLED DIMENSIONS (W x D x H)	74.75 X 29.75 X 75 IN. (189.9 X 75.6 X 190.5 CM)
PACKAGE DIMENSIONS (W x D x H)	75.75 X 30 X 7 IN. (192.4 X 76.2 X 17.8 CM)
WEIGHT	160 LB (72.6 KG)
LOAD CAPACITY	SCAFFOLDING: 1,100 LB (500 KG). COMBINED WEIGHT OF USER + MATERIALS. STORAGE SHELF: 200 LB (90.7 KG) DISTRIBUTED WEIGHT.
WORKING HEIGHTS	27 TO 73 IN. (69 TO 185 CM). 2 IN. (5 CM) INCREMENT ADJUSTABLE HEIGHTS
REACH	12 FT (3.7 M). STACKABLE UP TO 3 UNITS HIGH FOR 24 FT (7.4 M) REACH
CASTERS	5 IN. (13 CM) DOUBLE LOCKING HEAVY DUTY
OPTIONS	SEE PAGE 5
UPC CODE	778300003006



## MULTI-FUNCTION WORKBENCH™

**500 lb**  
LOAD CAPACITY

**9.9'**  
REACH



### ALL INCLUSIVE

Miter Saw Stand, Work Bench, Utility Cart, Storage Rack and Work Platform.

PRODUCT CODE	I-SB3M
ASSEMBLED DIMENSIONS (W x D x H)	56.5 X 29.25 X 37.5 IN. (143.5 X 74.30 X 95.3 CM)
PACKAGE DIMENSIONS (W x D x H)	60 X 4 X 30.5 IN. (152.4 X 10.2 X 77.5 CM)
WEIGHT	98.8 LB (44.8 KG)
LOAD CAPACITY	SCAFFOLDING: 500 LB (227 KG) COMBINED WEIGHT OF USER + MATERIALS. STORAGE SHELF: 200 LB (90.7 KG) DISTRIBUTED WEIGHT.
WORKING HEIGHTS	19.5 TO 37.25 IN. (49.5 TO 94.5 CM). 2 IN. (5 CM) INCREMENT ADJUSTABLE HEIGHTS
REACH	9.9 FT (3.01 M)
CASTERS	5 IN. (13 CM) DOUBLE LOCKING HEAVY DUTY
UPC CODE	778300005369





**JOBSITE™ SERIES 5'**

**900 lb**  
LOAD CAPACITY

**10'**  
REACH



**JOBSITE™ SERIES 4'**

**500 lb**  
LOAD CAPACITY

**9'**  
REACH



**JOBSITE™ SERIES 4'**

**500 lb**  
LOAD CAPACITY

**9'**  
REACH



#### TOOL SHELF & SAFETY RAIL

Safety rail to hold on to, for stability. Convenient fold away tool shelf for paint can, bucket, screws, nails and tools.



#### TOOL SHELF & SAFETY RAIL

Safety rail to hold on to, for stability. Convenient fold away tool shelf for paint can, bucket, screws, nails and tools.



#### EASY STORAGE

Folds flat for compact storage and transport.



#### STABLE AND STURDY

Double locking 5" wheels, anti-slip platforms and included outriggers provide safety.



#### WORKBENCH

Multi-level working area. Adjust platforms up to the desired level for a comfortable workplace.



#### TRANSPORT

Use it as a cart to haul your equipment and heavy loads to and from job sites. 500 lb (227 kg) capacity.

<b>PRODUCT CODE</b>	I-IMIS
<b>ASSEMBLED DIMENSIONS (W x D x H)</b>	50.5 X 31 X 76.5 IN. (128.3 X 78.7 X 194.3 CM)
<b>PACKAGE DIMENSIONS (W x D x H)</b>	44 X 23 X 7.5 IN. (111.8 X 58.4 X 19.1 CM)
<b>WEIGHT</b>	77 LB (35 KG)
<b>LOAD CAPACITY</b>	900 LB (408 KG) COMBINED WEIGHT OF USER + MATERIALS
<b>WORKING HEIGHTS</b>	11.5 - 25 - 36.5 - 48 IN. (29 - 64 - 93 - 122 CM)
<b>REACH</b>	10 FT (3 M)
<b>CASTERS</b>	5 IN. (13 CM) DOUBLE LOCKING HEAVY DUTY
<b>UPC CODE</b>	778300100019

<b>PRODUCT CODE</b>	I-IMCNT
<b>ASSEMBLED DIMENSIONS (W x D x H)</b>	49.5 X 22.5 X 57.75 IN. (125.7 X 57.2 X 146.7 CM)
<b>PACKAGE DIMENSIONS (W x D x H)</b>	43.25 X 24 X 4.5 IN. (109.9 X 61 X 11.4 CM)
<b>WEIGHT</b>	59 LB (26.8 KG)
<b>LOAD CAPACITY</b>	500 LB (227 KG) COMBINED WEIGHT OF USER + MATERIALS
<b>WORKING HEIGHTS</b>	10 - 21.5 - 33 IN. (25 - 55 - 84 CM)
<b>REACH</b>	9 FT (2.75 M)
<b>CASTERS</b>	4 IN. (10 CM) DOUBLE LOCKING HEAVY DUTY
<b>UPC CODE</b>	778300100224

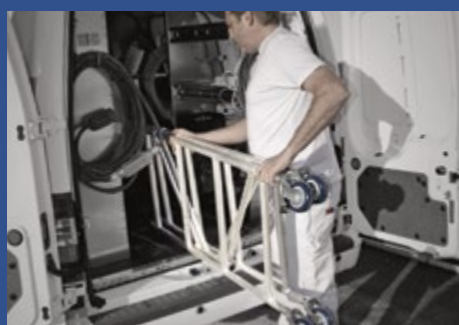
<b>PRODUCT CODE</b>	I-IMCN
<b>ASSEMBLED DIMENSIONS (W x D x H)</b>	41 X 22.5 X 45.75 IN. (104.1 X 57.2 X 116.2 CM)
<b>PACKAGE DIMENSIONS (W x D x H)</b>	43.25 X 24 X 3.75 IN. (109.7 X 60.8 X 9.8 CM)
<b>WEIGHT</b>	50 LB (22.7 KG)
<b>LOAD CAPACITY</b>	500 LB (227 KG) COMBINED WEIGHT OF USER + MATERIALS
<b>WORKING HEIGHTS</b>	10 - 21.5 - 33 PO (25 - 55 - 84 CM)
<b>REACH</b>	9 FT (2.75 M)
<b>CASTERS</b>	4 IN. (10 CM) DOUBLE LOCKING HEAVY DUTY
<b>UPC CODE</b>	778300100200



## ALU<sup>TM</sup> SERIES 4'

**600 lb**  
LOAD CAPACITY

**9'**  
REACH



### EASY STORAGE

Fold flat for compact storage and transport

PRODUCT CODE	I-IMAC
ASSEMBLED DIMENSIONS (W x D x H)	42.25 X 22.25 X 47.75 IN. (107.3 X 56.5 X 121.4 CM)
PACKAGE DIMENSIONS (W x D x H)	43.75 X 22.5 X 4.75 IN. (111 X 57.2 X 12.1 CM)
WEIGHT	35.2 LB (16 KG)
LOAD CAPACITY	600 LB (272 KG) COMBINED WEIGHT OF USER + MATERIALS
WORKING HEIGHTS	9.5 - 21.25 - 33 IN. (24 - 54 - 84 CM)
REACH	9 FT (2.75 M)
CASTERS	4 IN. (10 CM) DOUBLE LOCKING HEAVY DUTY
UPC CODE	778300100408



## ALU<sup>TM</sup> SERIES 6'

**700 lb**  
LOAD CAPACITY

**12'**  
REACH



### USE IT AS A CART

To haul your equipment and heavy loads to and from job sites. 700 lb capacity.

PRODUCT CODE	I-CAIRC
ASSEMBLED DIMENSIONS (W x D x H)	56.5 X 29 X 72 IN. (143.5 X 73.7 X 182.9 CM)
PACKAGE DIMENSIONS (W x D x H)	67.5 X 30.5 X 6.5 IN. (171.5 X 77.5 X 16.5 CM)
WEIGHT	60 LB (27 KG)
LOAD CAPACITY	700 LB (318 KG) COMBINED WEIGHT OF USER + MATERIALS
WORKING HEIGHTS	11.75 - 23.5 - 35.25 - 47 - 59 - 70.75 IN. (30 - 60 - 90 - 119 - 150 - 180 CM)
REACH	12 FT (3.7 M)
CASTERS	5 IN. (13 CM) DOUBLE LOCKING HEAVY DUTY
UPC CODE	778300420155



## ALU SERIES<sup>TM</sup> 6' BAKER

**700 lb**  
LOAD CAPACITY

**12'**  
REACH



### MULTI PURPOSE

Suitable and safe for all types of interior work. Each end can adjust separately to be used on both level surfaces and stairways. At 30" (76 cm) wide, can easily roll through doorways.

PRODUCT CODE	I-CAISC
ASSEMBLED DIMENSIONS (W x D x H)	74 X 30.75 X 74.5 IN. (187.7 X 78.2 X 189.5 CM)
PACKAGE DIMENSIONS (W x D x H)	74.75 X 30.25 X 6.25 IN. (189.7 X 76.9 X 16 CM)
WEIGHT	85 LB (38.6 KG)
LOAD CAPACITY	700 LB (318 KG) COMBINED WEIGHT OF USER + MATERIALS
WORKING HEIGHTS	FROM 26.75 TO 73 IN. (67.9 TO 185.1 CM). 2 IN. (5 CM) INCREMENT ADJUSTABLE HEIGHTS
REACH	12 FT (3.7 M) STACKABLE UP TO 3 UNITS HIGH FOR 24 FT (7.4 M) REACH
CASTERS	5 IN. (13 CM) DOUBLE LOCKING HEAVY DUTY
OPTIONS	GUARDRAILS / SET OF 4 OUTRIGGERS / SET OF 4 BASE PLATES / SAFETY BRAKES / SET OF 4 LEVELING JACKS / TOOL SHELF
UPC CODE	778300220106

**CONTACT US:**  
**SALES@D1SAFETY.COM**  
**WWW.D1SAFETY.COM**

**ALL PRODUCTS  
MEET** **ANSI  
OSHA  
CSA**



### GOING PAPERLESS?



Scan for a quick access to  
a digital version (PDF)